

DOOR HEIGHT	U-BARS	SECTION HEIGHTS			
		BOTTOM	#2	#3	#4
6'-0"	5	18"	18"	18"	18"
6'-0"	4	24"	24"		24"
6'-3"	5	20.8"	18"	18"	18"
6'-6"	5	20.8"	18"	18"	20.8"
6'-9"	5	20.8"	20.8"	18"	20.8"
7'-0"	5	20.8"	20.8"	20.8"	20.8"
7'-3"	5	24"	20.8"	20.8"	20.8"
7'-6"	6	18"	18"	18"	18"
7'-6"	5	24"	20.8"	20.8"	24"
7'-9"	6	20.8"	18"	18"	18"
7'-9"	5	24"	24"	24"	20.8"
8'-0"	6	20.8"	18"	18"	20.8"
8'-0"	5	24"	24"	24"	24"

NOTES:

1. ALL 8300/8500 SERIES DOOR WIDTHS FROM 10'-0" TO 18'-0" AND 5150/5200 SERIES DOOR WIDTHS FROM 9'-3" TO 18'-0" APPROVED (ALL HEIGHTS FROM 6'-0 TO 8'-0).
2. OPTIONAL - .080" (MIN) ALUMINUM LOUVERS WITH HIGH IMPACT STYRENE FRAME MAY BE LOCATED IN THE END PANELS OF THE BOTTOM SECTION TO MEET MINIMUM VENTILATION REQUIREMENTS.
3. VINYL OR WOOD DOOR STOP (NAILED ON 6" CENTERS) MUST OVERLAP TOP & BOTTOM ENDS OF PANELS MINIMUM 7/16" TO MEET NEGATIVE PRESSURES.

Approved: _____
 Mark R. Barrow, P.E.
 3395 ADDISON DRIVE PENSACOLA, FL 32514
 FLORIDA CERTIFICATION NO. 57389

Date: _____

DATE COUNTY USE ONLY

DRAWN	DATE	NAME	SHEET 1 OF 3
CHECKED	10/10/2001	COONEWICH	
APPR.			

PROJECT: WINDLOAD/WMK3300

DESIGN PRESSURE: +40.00 / -44.50 PSF

OPTION CODE: 0131

REV: P4

Wayne Dalton

3395 ADDISON DRIVE
 PENSACOLA, FLORIDA 32514
 (850) 474-9890

PART NO. 297945

R & D RELEASE TO PRODUCT DATE ENGINEERING

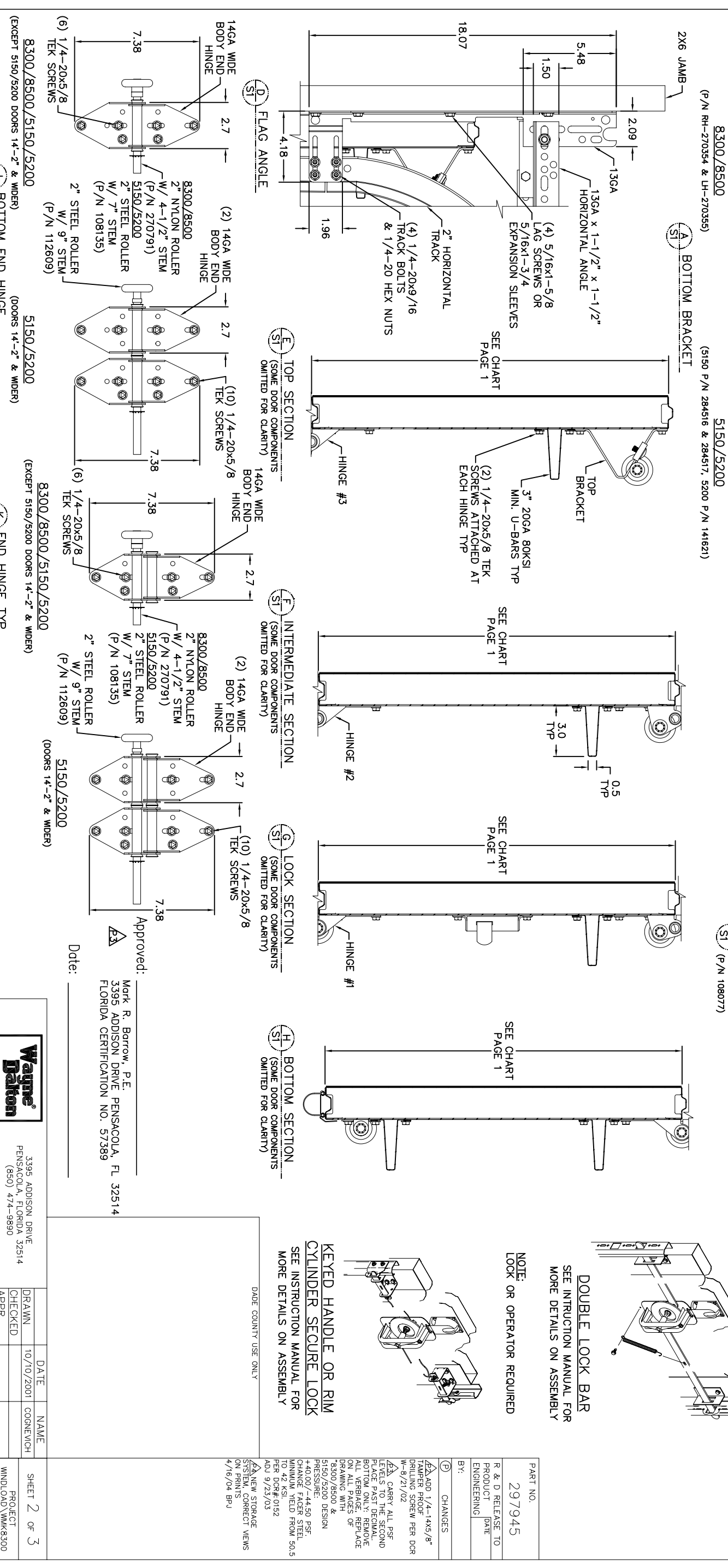
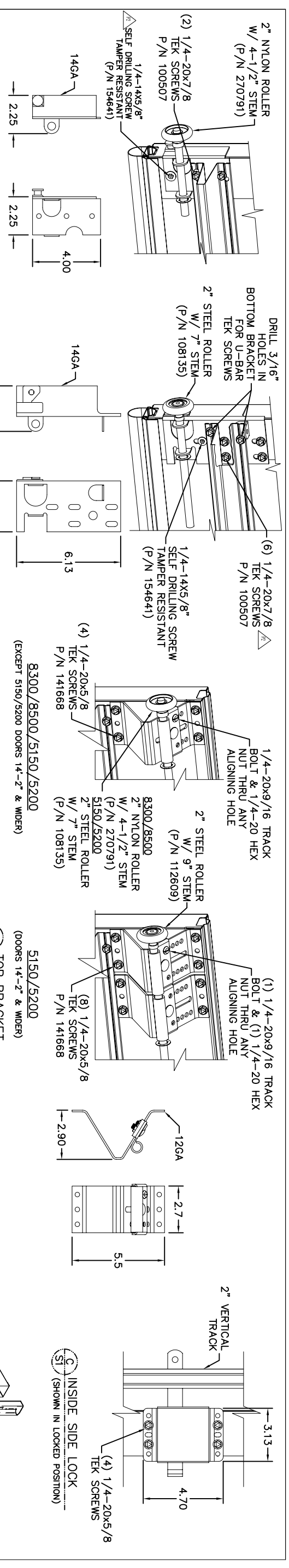
BY: _____

CHANGES

ADD 1/4"-14x5/8" TAMPER PROOF DRILLING SCREW PER DCR W-8/21/02

CARRY ALL PSF LOADS TO THE SECOND PLAGE PAST DEGMAL BOTTOM ONLY. REMOVE ALL VERBRAGE. REPLACE ON ALL PAGES OF DRAWING WITH 8300/8500 & 5150/5200 DESIGN PRESSURE: 1.50 PSF CHANGE FAGER STEEL MINIMUM YIELD FROM 50.5 TO 42 KSI. PER DCR# 0152 ADJ 9/23/03

NEW STORAGE SYSTEM. CORRECT NEWS ON PRINTS 4/16/04 BRJ



DATE COUNTY USE ONLY

KEYED HANDLE OR RIM CYLINDER SECURE LOCK
SEE INSTRUCTION MANUAL FOR MORE DETAILS ON ASSEMBLY

NOTE:
LOOK OR OPERATOR REQUIRED

DOUBLE LOCK BAR
SEE INSTRUCTION MANUAL FOR MORE DETAILS ON ASSEMBLY

PART NO. 297945

R & D RELEASE TO	DATE
PRODUCT	DATE
ENGINEERING	
BY:	
CHANGES	

1. ADD 1/4-14x5/8" TAMPER PROOF DRILLING SCREW PER DOR W-8/21/02
 2. CARRY ALL PSF LEVELS TO THE SECOND PLACE PAST DECIMAL.
 3. BOTTOM ONLY: REMOVE ALL VERBAGE, REPLACE ON ALL PAGES OF DRAWING WITH 8300/8500 & 5150/5200 DESIGN
 4. 8300/8500 & 5150/5200 DESIGN
 5. 44.00/-44.50 PSF CHANGE FINDER STEEL
 6. MINIMUM YIELD FROM 50.5 TO 42 KSI
 7. PER DOR# 0152
 8. ADJ 9/23/03
 9. NEW STORAGE SYSTEM, CORRECT VIEWS ON PRINTS
 10. 4/16/04 BPJ

DATE: _____

Approved: _____

Mark R. Barrow, P.E.
3395 ADDISON DRIVE PENSACOLA, FL 32514
FLORIDA CERTIFICATION NO. 57369

DRAWN	DATE	NAME
CHECKED	10/10/2001	COONEWICH
APPR.		

PROJECT: WINDLOAD/WMA8300

DESIGN PRESSURE: +40.00/-44.50 PSF

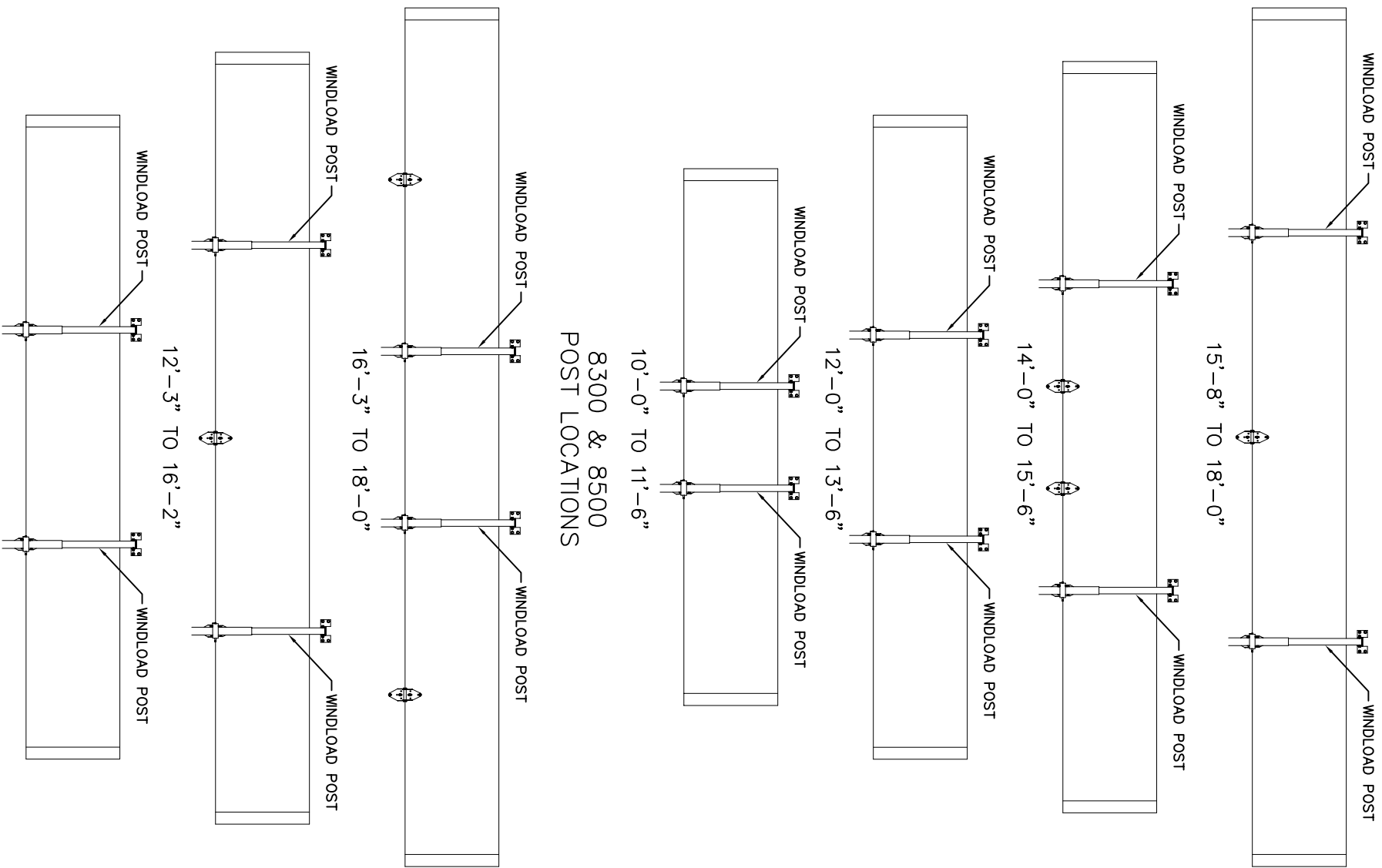
SIZE: C

OPTION CODE: 0131

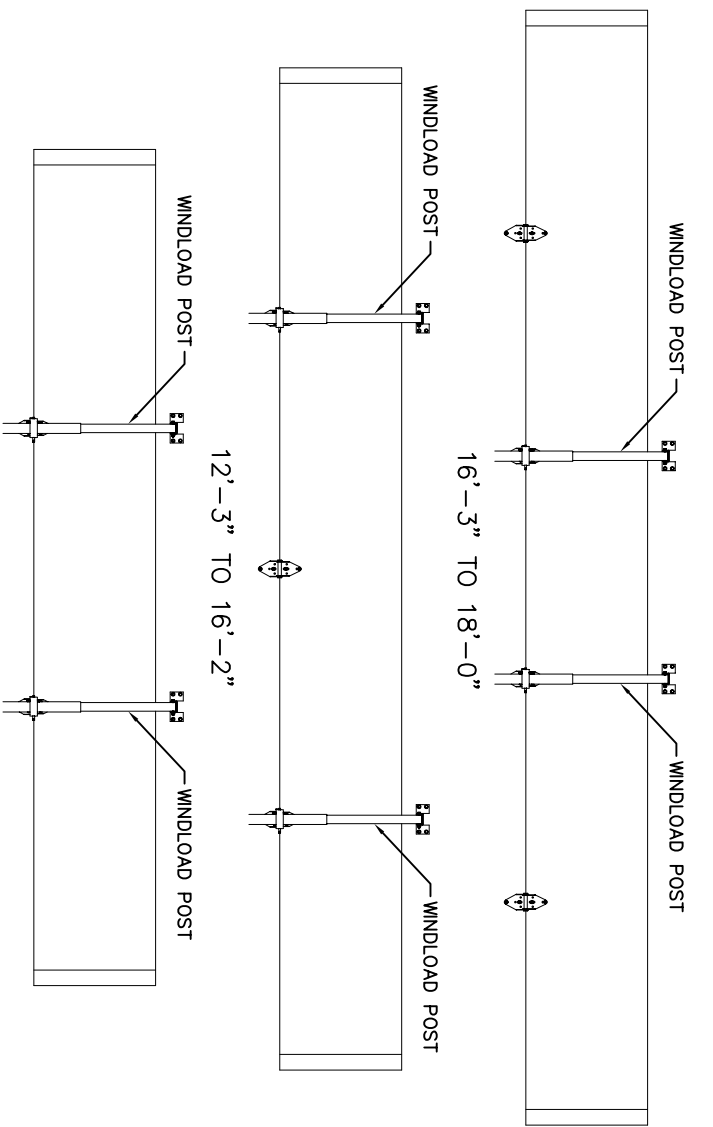
REV: P4

SHEET 2 OF 3

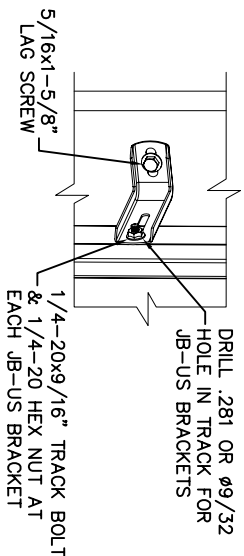




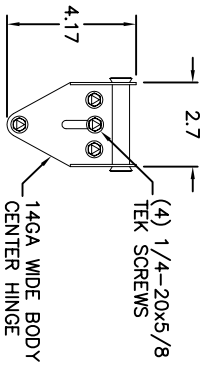
**8300 & 8500
POST LOCATIONS**



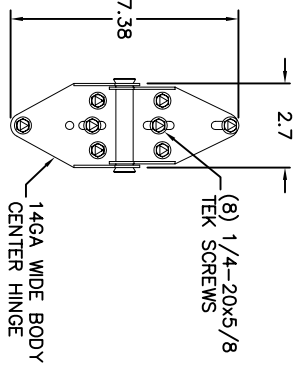
**5150 & 5200
POST LOCATIONS**



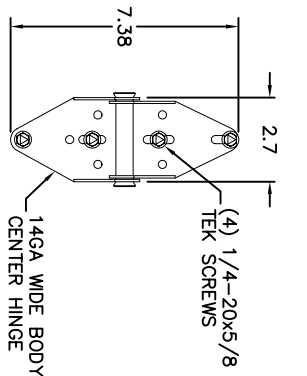
(A) JB-US BRACKET
(P/N 125139)



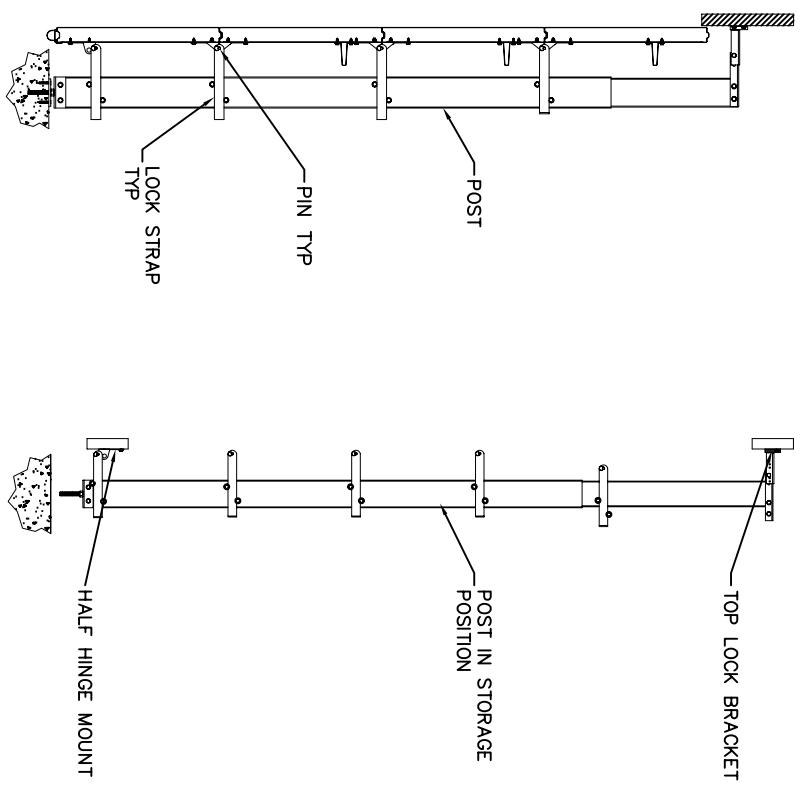
(D) POST HALF HINGE TYP



(C) POST HINGE TYP



(B) CENTER HINGE TYP



SECTION S3-A

SECTION S3-B

**INSTALL POST USING
WINDLOAD POST INSTALLATION
INSTRUCTIONS
(P/N 298473)**

Approved: **Mark R. Barrow, P.E.**
3395 ADDISON DRIVE PENSACOLA, FL 32514
FLORIDA CERTIFICATION NO. 57389

Date: _____

PART NO.	297945
R & D RELEASE TO PRODUCT DATE ENGINEERING	
BY:	
CHANGES	
<p>ADD 1/4-1 1/4x5/8\"/> </p>	
<p>CARRY ALL PSF LEVELS TO THE SECOND PLAGE PAST DEOMAL BOTTOM ONLY. REMOVE ALL VERBRAGE, REPLACE ON ALL PAGES OF DRAWING WITH 8300/8500 & 5150/5200 DESIGN PER 9/23/03</p>	
<p>NEW STORAGE SYSTEM CORRECT VIEWS ON PRINTS 4/16/04 BpJ</p>	

<p>DADE COUNTY USE ONLY</p>	
DATE	NAME
10/10/2001	COGNEWICH
CHECKED	
APPR.	
PROJECT	WINDLOAD/VMK8300
OPTION CODE	REV
0131	P4
DESIGN PRESSURE: +40.00/-44.50 PSF	SIZE C



3395 ADDISON DRIVE
PENSACOLA, FLORIDA 32514
(850) 474-9890