

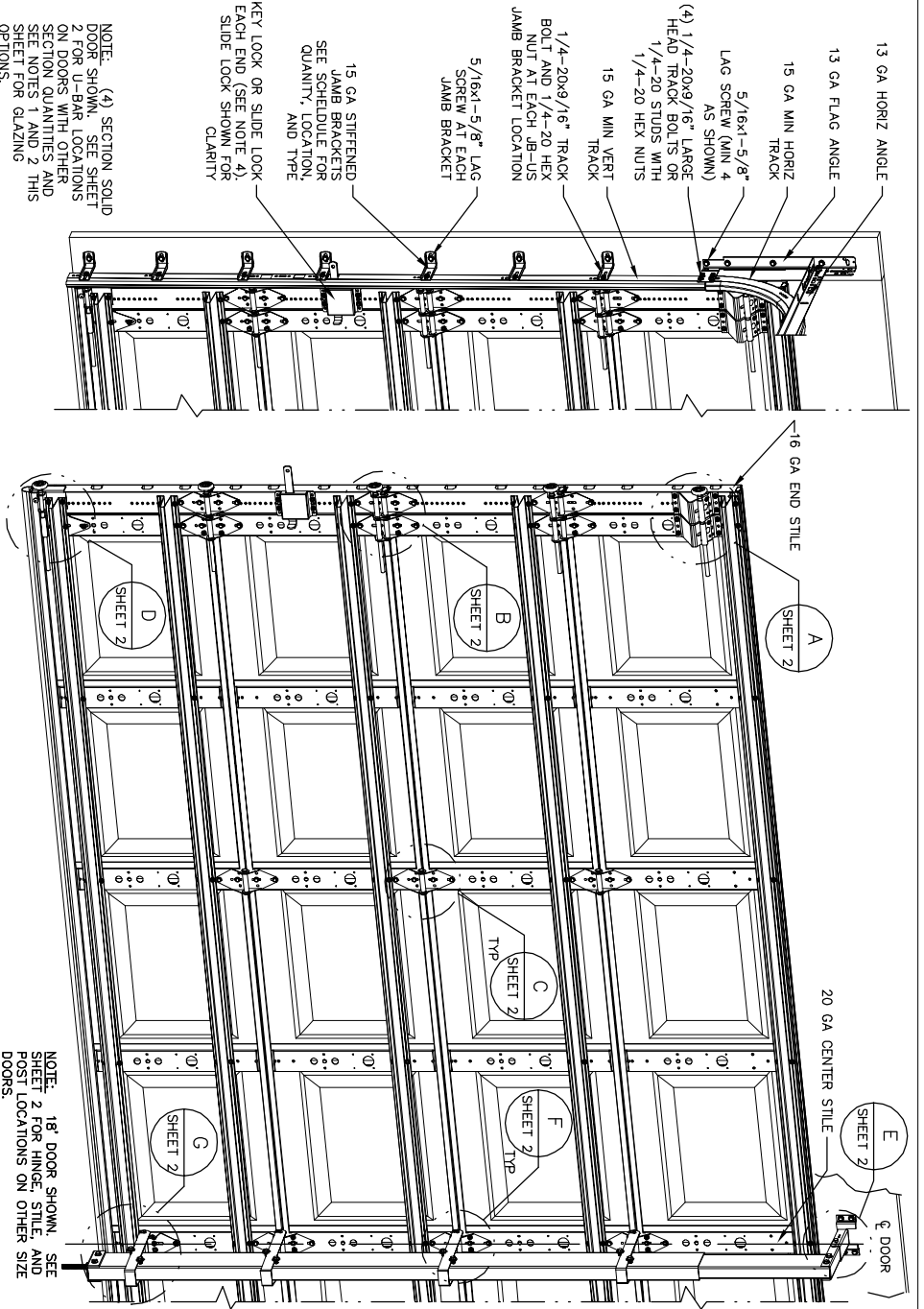
**NOTES:**

- IMPACT RESISTANT GLAZING OPTION— IMPACT RESISTANT GLAZING SYSTEM MAY BE INSTALLED IN TOP OR INTERMEDIATE SECTION (WITH OR WITHOUT DECORATIVE INSERTS) GLAZING SHALL BE 1/4" POLYCARBONATE. MAXIMUM GLAZING DIMENSIONS SHALL BE 11' x 17' CUTOUT FASTENED WITH #8 X 1" SMS. 3X ALONG THE HORIZONTAL AND 2X ALONG THE VERTICAL. SEE DETAIL J ON SHEET 2 FOR ASSEMBLY DETAILS.
- NON-IMPACT RESISTANT GLAZING OPTION— .090" MINIMUM SSG GLAZING IN MOLDED FRAMES SCREWED TOGETHER WITH A MINIMUM OF (10) #8X1 SCREWS INSTALLED IN TOP OR INTERMEDIATE SECTION (WITH OR WITHOUT DECORATIVE INSERTS) MEETS UNIFORM OR STATIC WIND PRESSURES SHOWN ON THIS DRAWING. GLAZING SHALL HAVE A MAXIMUM HEIGHT OF 10.69' AND A MAXIMUM LENGTH OF 16.94'. GLAZING IS NOT IMPACT RESISTANT AND DOES NOT MEET THE REQUIREMENTS FOR WIND-BORNE DEBRIS REGIONS.
- VINYL OR WOOD DOOR STOP NAILLED A MAXIMUM OF 6" O.C. MUST OVERLAP TOP AND BOTH ENDS OF PANELS MINIMUM 7/16" TO MEET NEGATIVE PRESSURES.
- KEY LOCK OR SLIDE LOCKS REQUIRED.
- LOUVER OPTION — .040" MINIMUM LOUVERS IN MOLDED FRAMES SCREWED TOGETHER WITH A MINIMUM OF (10) #8X1 SCREWS INSTALLED IN THE BOTTOM SECTION. LOUVERS ARE NOT IMPACT RESISTANT AND DO NOT MEET THE REQUIREMENTS FOR WIND-BORNE DEBRIS REGIONS.
- SECTION STEEL TO HAVE A MINIMUM 26 GA THICKNESS.
- THE DESIGN OF THE SUPPORTING STRUCTURAL ELEMENTS SHALL BE THE RESPONSIBILITY OF THE PROFESSIONAL OF RECORD FOR THE BUILDING OR STRUCTURE AND IN ACCORDANCE WITH CURRENT BUILDING CODES FOR THE LOADS LISTED ON THIS DRAWING.
- DOOR JAMB TO BE MINIMUM 2x4 STRUCTURAL GRADE LUMBER. REFER TO JAMB CONNECTION SUPPLEMENT FOR ATTACHMENT TO SUPPORTING STRUCTURE.
- FOR LOW HEAD ROOM LIFT CONDITIONS, TOP BRACKET SHALL BE A 13 GA LHR 7/4 TOP BRACKET WITH A MINIMUM OF (3) 1/4-14x7/8" SELF DRILLING CHAMPTITE SCREWS IN LIEU OF THE BRACKET SHOWN ON THIS DRAWING. U-BAR ON TOP SECTION SHALL BE INSTALLED ON TOP OF LHR TOP BRACKETS.

**SUPERIMPOSED DESIGN PRESSURE LOADS ON SUPPORTING STRUCTURE**

MAX DOOR WIDTH	UNIFORM LOAD EACH JAMB (PLF)	POINT LOAD AT HEAD AND SLAB AT EACH POST LOCATION (LBS)
17'-0"	+185.5/-209.6	+1507.4/-1712.9
8'-0"	+185.5/-209.6	+1704.0/-1936.3
7'-0"	+193.7/-215.7	+1637.0/-1850.5
18'-0"	+190.7/-215.7	+1860.3/-2102.9

NOTE: (JB-US) FOLLOWING DIMENSION DENOTES SLOTTED JAMB BRACKET ATTACHED TO TRACK WITH 1/4-20x9/16" TRACK BOLT AND NUT AS SHOWN ABOVE.



- REVISIONS**
- P1 MODIFIED NOTES TO STATE THAT LOUVERS ARE NOT IMPACT RESISTANT. INCREASED DESIGN PRESSURES TO 146.00/-52.00. GRT 6/29/07
  - P2 ADDED IMPACT RESISTANT GLAZING. FODDED DETAIL J SHEET 2 FOR GLAZING. REMOVED FROM NOTES AND ADDED DETAIL H SHEET 2 FOR CONCRETE SPECIFICATION. ADDED MAX GLAZING DIMENSION TO NOTES SHEET 1. MODIFIED JAMB BRACKET SCHEDULE. ADDED TRACK TO FLAG CONNECTION NOTE. MODIFIED SUPERIMPOSED DESIGN PRESSURE LOAD CHART. GRT 11/10/07
  - P3 MODIFIED LOUVER OPTION. ADDED TEXAS LICENSE NUMBER TO TITLE BLOCK. GRT 9/19/08
  - P4 UPDATED TITLE BLOCK AND IMPACT GLAZING GRT 4/16/12

**JAMB BRACKET SCHEDULE**

DOOR HEIGHT SECTIONS	NO. OF JAMB BRACKETS (EACH JAMB)	LOCATION OF CENTERLINE OF JAMB BRACKETS MEASURED FROM BOTTOM OF TRACK (ALL DIMENSIONS ± 2")
6'-6"	4	2" (JB-US), 10" (JB-US), 21-3/4" (JB-US), 29-3/4" (JB-US), 48" (JB-US), 57-1/2" (JB-US)
7'-0"	4	2" (JB-US), 10" (JB-US), 21-3/4" (JB-US), 29-3/4" (JB-US), 42" (JB-US), 52-1/2" (JB-US), 63-1/4" (JB-US)
7'-6"	5	2" (JB-US), 10" (JB-US), 18-3/4" (JB-US), 26-3/4" (JB-US), 36" (JB-US), 45" (JB-US), 54-1/4" (JB-US), 63" (JB-US), 74-1/2" (JB-US)
8'-0"	5	2" (JB-US), 10" (JB-US), 21-3/4" (JB-US), 29-3/4" (JB-US), 39" (JB-US), 48" (JB-US), 57-1/2" (JB-US), 66" (JB-US), 75-1/2" (JB-US)

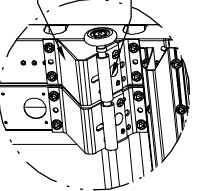
NOTE: (4) SECTION SHOWN. SEE SHEET 2 FOR U-BAR LOCATIONS ON DOORS WITH OTHER SECTION QUANTITIES AND SEE NOTES 1 AND 2 THIS SHEET FOR GLAZING OPTIONS.

MARK A. SAWICKI, PE  
 2501 S. STATE HWY 121, SUITE 200  
 LEWISVILLE, TX 75067  
 TX PE 72693  
 TX PE 062891

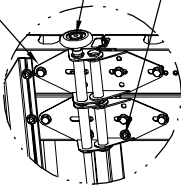


STATIC PRESSURE RATINGS	APPROVED SIZES	SCALE: N.T.S.	SIZE: A
DESIGN (PSF): +46.00/-52.00	MAX WIDTH: 18'-0"	DATE	NAME
TEST (PSF): +69.00/-78.00	MAX HEIGHT: 8'-0"	DRAWN	GRT
IMPACT/CYCLIC RATED (YES/NO): YES	MAX SECTION HEIGHT: 21"	CHECKED	1/22/07
MODELS 8000/8100		SHEET 1 OF 2	REV.
WINDLOAD SPECIFICATION OPTION CODE 1144		DRAWING PART NO.	327024
A DIVISION OF OVERHEAD DOOR CORP. 3395 ADDISON DRIVE PENSACOLA, FLORIDA 32514 (850) 474-9890		REV.	P4

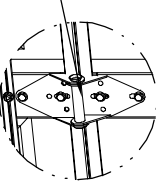
13 GA ROLLER SLIDE ATTACHED TO BRACKET SLOT WITH 5/16-18 BOLT & NUT IN CENTER SLOT AND 1/4-20x9/16" TRACK BOLT & 1/4-20 HEX NUT THROUGH ANY TWO ALIGNING HOLES



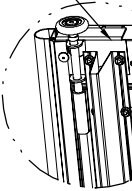
ADD (2) 1/4-14x7/8" SELF-DRILLING CRIMPITE SCREWS (INSIDE OF EACH INSIDE END HINGE)



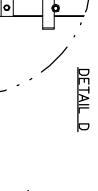
(2) 14 GA WIDE BODY END HINGES EACH ATTACHED WITH (4) 1/4-14x5/8" SELF TAPPING SCREWS



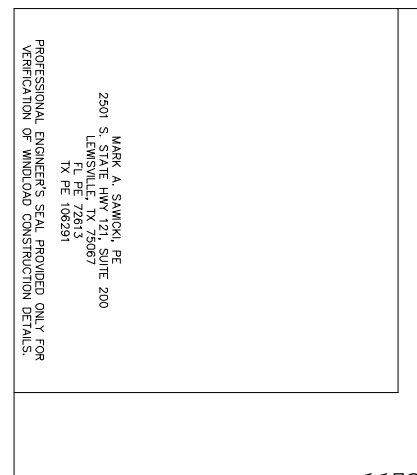
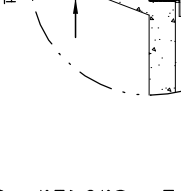
14 GA WIDE BODY INTERMEDIATE HINGE ATTACHED WITH (4) 1/4-14x5/8" SELF TAPPING SCREWS



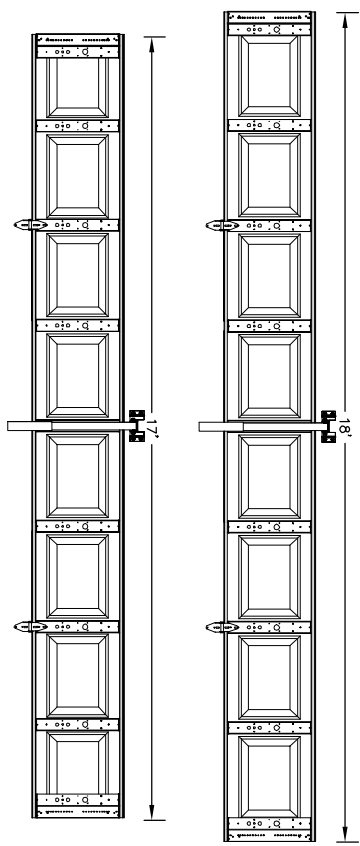
12 GA EXTENSION BRACKET ATTACHED WITH (3) 1/4-14x7/8" SELF DRILLING CRIMPITE SCREWS (2 THROUGH STRUT AND BRACKET)



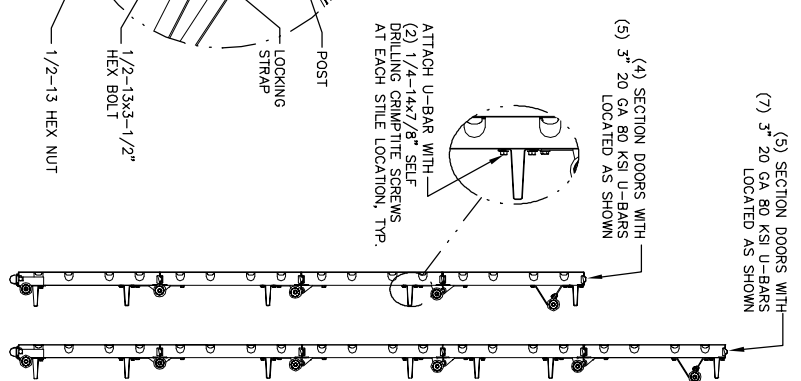
14 GA BOTTOM BRACKET ATTACHED WITH (2) 1/4-14x7/8" SELF DRILLING CRIMPITE SCREWS THROUGH STRUT AND BOTTOM BRACKET AND (1) 1/4-14x5/8" SELF DRILLING TAMPER RESISTANT SCREW



**COVER SLIDE INTERMEDIATE HINGE & POST LOCATIONS**



**U-BAR LOCATIONS**

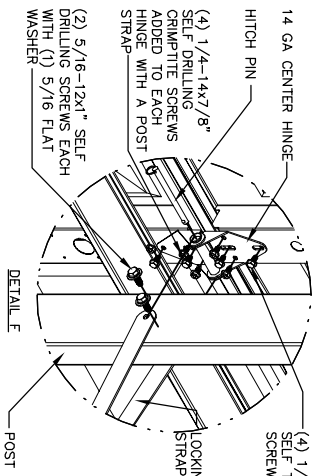


(5) SECTION DOORS WITH 3" 20 GA 80 KSI U-BARS LOCATED AS SHOWN

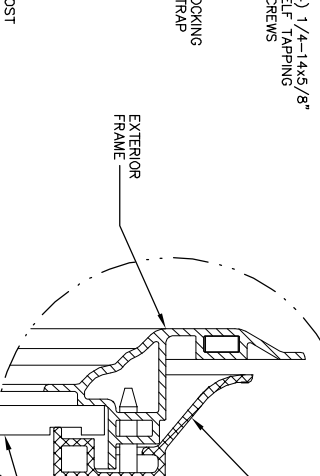
(4) SECTION DOORS WITH 3" 20 GA 80 KSI U-BARS LOCATED AS SHOWN

ATTACH U-BAR WITH (2) 1/4-14x7/8" SELF DRILLING CRIMPITE SCREWS AT EACH STILE LOCATION, TYP.

- REVISIONS
- P1 MODIFIED NOTES TO STATE THAT LOUVERS ARE NOT IMPACT RESISTANT, INCREASED DESIGN PRESSURES TO +46.00/-52.00. GRT 6/29/07
  - P2 ADDED IMPACT RESISTANT GLAZING. ADDED DETAIL J SHEET 2 FOR GLAZING, REMOVED FROM NOTES AND ADDED DETAIL H SHEET 2 FOR CONCRETE SPECIFICATION. ADDED MAX GLAZING DIMENSION TO NOTES.
  - SHEET 1, MODIFIED JAMB BRACKET SCHEDULE. ADDED TRACK TO FLAG CONNECTION NOTE. MODIFIED SUPERIMPOSED DESIGN PRESSURE LOAD CHART.
  - GRT 11/10/07
  - P3 MODIFIED LOUVER OPTION. ADDED TEXAS LICENSE NUMBER TO TITLE BLOCK. GRT 9/19/08
  - P4 UPDATED TITLE BLOCK AND IMPACT GLAZING GRT 4/16/12



TOP PLATE EXTENSION  
 HEADER LOCK BRACKET  
 (4) 5/16x1-5/8" LAG SCREWS  
 5/16-18x2-1/2" HEX BOLT & NUT  
 (4) 5/16-12x1" SELF DRILLING SCREWS  
 INNER POST  
 (4) 1/4-14x5/8" SELF TAPPING SCREWS  
 LOCKING STRAP  
 (2) 5/16-12x1" SELF DRILLING SCREWS EACH WITH (1) 5/16 FLAT WASHER  
 POST



NO. 2 HALF HINGE ALIGN BOTTOM OF HINGE WITH TOP OF THE U-BAR  
 (4) 1/4-14x7/8" SELF DRILLING CRIMPITE SCREWS  
 (4) 5/16-12x1" SELF DRILLING SCREWS W/ 5/16 FLAT WASHERS  
 BOTTOM BRACKET  
 (4) 5/16-12x1" SELF DRILLING SCREWS  
 1/2-13 HEX NUT  
 POST  
 LOCKING STRAP  
 INTERIOR FRAME  
 SHEETMETAL SCREW  
 EXTERIOR FRAME  
 1/4" POLYCARBONATE

**Wayne Dalton**  
 A DIVISION OF OVERHEAD DOOR CORP.  
 3395 ADDISON DRIVE  
 PENSACOLA, FLORIDA 32514  
 (850) 474-9890

STATIC PRESSURE RATINGS		APPROVED SIZES		SCALE: N.T.S.	
DESIGN (PSF):	+46.00/-52.00	MAX WIDTH:	18'-0"	DATE:	
TEST (PSF):	+69.00/-78.00	MAX HEIGHT:	8'-0"	DRAWN:	5/26/06
IMPACT/CYCLIC RATED (YES/NO):	YES	MAX SECTION HEIGHT:	21"	CHECKED:	1/22/07
MODELS 8000/8100		SHEET 2 OF 2		REV.	
WINDLOAD SPECIFICATION OPTION CODE 1144		DRAWING PART NO. 327024		REV. P4	

MARK A. SAWICKI, PE  
 2501 S. STATE HWY 121, SUITE 200  
 LEWISVILLE, TX 75067  
 TX PE 72693  
 TX FE 062831

PROFESSIONAL ENGINEER'S SEAL PROVIDED ONLY FOR VERIFICATION OF WINDLOAD CONSTRUCTION DETAILS.